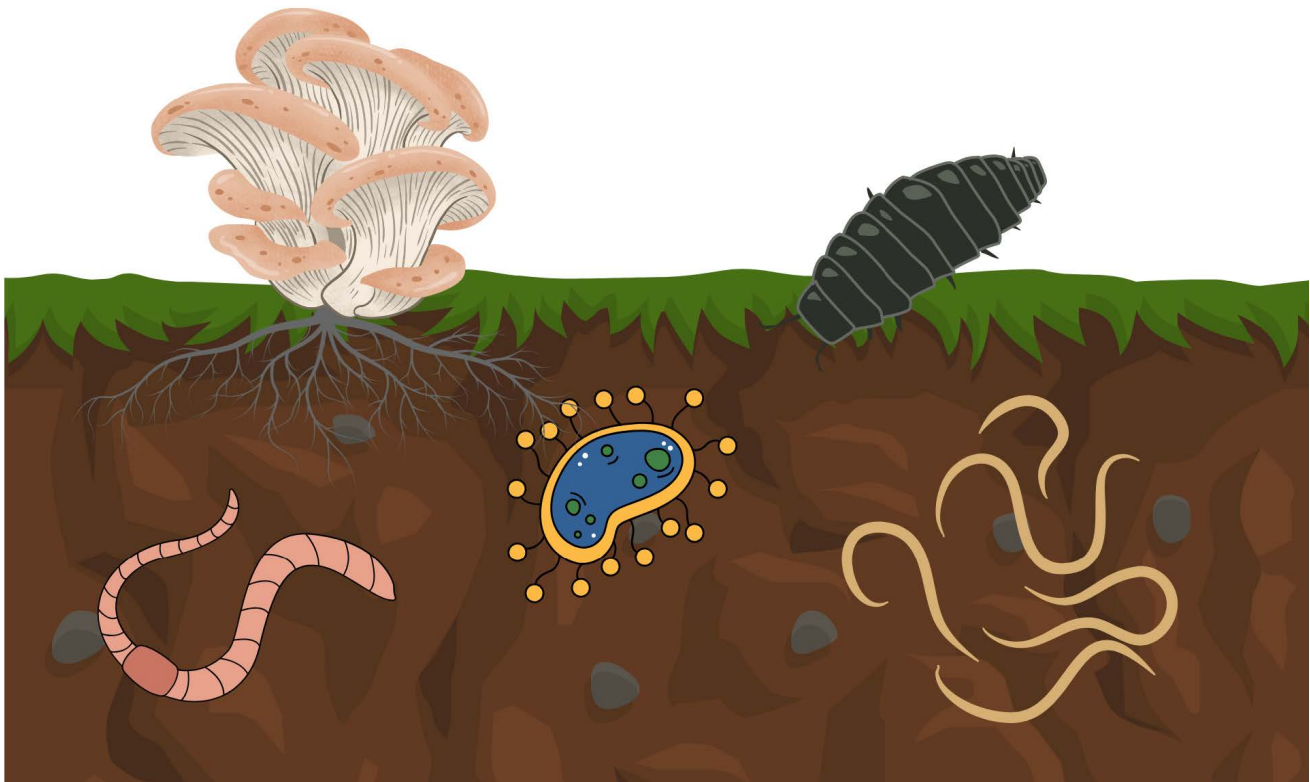


# Soil Dwellers

Through fun, interactive gameplay, children will learn how different organisms in the soil interact to create a healthy, thriving ecosystem, and how matter is cycled and energy is transferred as the properties of organisms change.



## IMAGE CREDITS

- Start card: "Garden with lady's slippers" by Ann Althouse is licensed under CC BY-NC 2.0.
- Card 1: "Wet Maple Leafs" by sjrankin is licensed under CC BY-NC 2.0.
- Card 2: "Money plant roots" by RIMIM is licensed under CC BY-SA 4.0.
- Card 3: Florida Division of Plant Industry Archive, Florida Department of Agriculture and Consumer Services, TheAlphaWolf, CC BY-SA 3.0 <<http://creativecommons.org/licenses/by-sa/3.0/>>, via Wikimedia Commons.
- Card 4: "Aspergillus fl vus (conidiophore and conidia)" by Plant pests and diseases is marked with CC0 1.0.
- Card 5: Ellen Larsson, CC BY 2.5 <<https://creativecommons.org/licenses/by/2.5/>>, via Wikimedia Commons.
- Card 6: Florida Division of Plant Industry Archive, Florida Department of Agriculture and Consumer Services, Bugwood.org, CC BY 3.0 <<https://creativecommons.org/licenses/by/3.0/>>, via Wikimedia Commons.
- Card 7: Louisa Howard - Dartmouth Electron Microscope Facility, Public domain, via Wikimedia Commons.
- Card 8: Pill Bug - Armadillium vulgare" by Cletus Lee is licensed under CC BY-NC-ND 2.0.
- Card 9: "Enchytraeus" by Mark Richman is licensed under CC BY 4.0.
- Card 10: "Foliar nematode pathogen" by Jody Fetzer is licensed under CC BY 3.0.
- Card 11: Tormikotkas, CC BY-SA 3.0 <<https://creativecommons.org/licenses/by-sa/3.0/>>, via Wikimedia Commons.
- Card 12: Photo Credit: Content Providers(s): CDC/ Dr. George Healy, Public domain, via Wikimedia Commons.
- Card 13: "Springtail Isotoma viridis" by Bugldy99 is licensed under CC BY-NC 2.0.
- Card 14: "Earthworm in Mud" by Squeezyboy is licensed under CC BY 2.0.
- Card 15: "Roundworm (Nematoda) wriggling around on a spider's web." by GeeC is licensed under CC BY 2.0.
- Card 16: Ground beetle: "Ground Beetle, Carabidae" by Greg Schechter is licensed under CC BY 2.0.
- Card 17: Ants: "Black Garden Ant tending Citrus Mealybug" by treegrow is licensed under CC BY 2.0.
- Card 18: Pseudoscorpion: "Pseudo Scorpion Phoresy" by hlydecker is licensed under CC BY-NC 2.0.
- Card 19: Robin: "American Robin" by Kevin M. Gill is licensed under CC BY 2.0.
- Card 20: Centipede: Palica, 2005. This file is licensed under the Creative Commons Attribution-Share Alike 3.0
- Card 21: Mole: "Mole" by Mick E. Talbot is licensed under CC BY-NC-SA 2.0.

# START

Go to 1 or 2

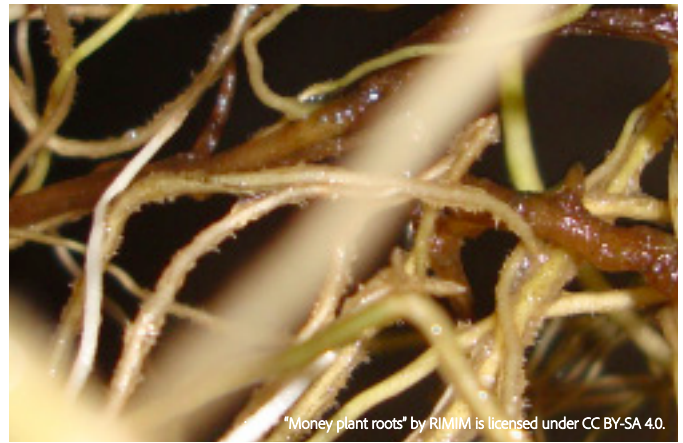






"Wet Maple Leafs" by sjrankin is licensed under CC BY-NC 2.0.

**You are decaying leaf litter that provides food for soil organisms. Go to 3, 7, 8, 9, or 14.**



"Money plant roots" by RIMIM is licensed under CC BY-SA 4.0.

**You are plant roots and secrete fluids that are beneficial to the soil and some organisms. Go to 5, 6, or 7.**



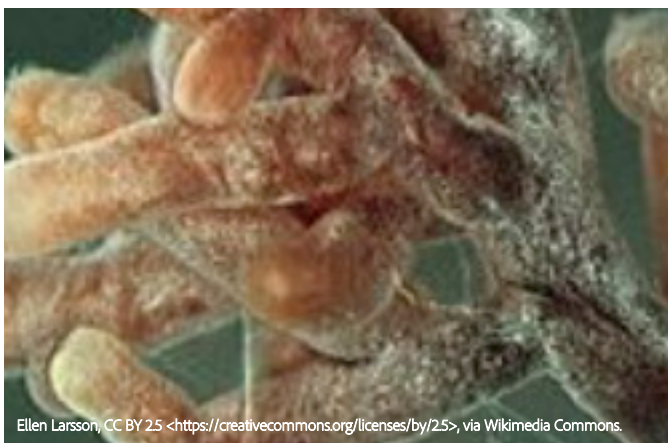
Florida Division of Plant Industry Archive, Florida Department of Agriculture and Consumer Services, TheAlmaWolf, CC BY-SA 3.0 <<http://creativecommons.org/licenses/by-sa/3.0/>>, via Wikimedia Commons

**You have been broken down by chemicals released by the thread-like hyphae of a fungus and become part of its body. Go to 8, 10, 13, or 14.**



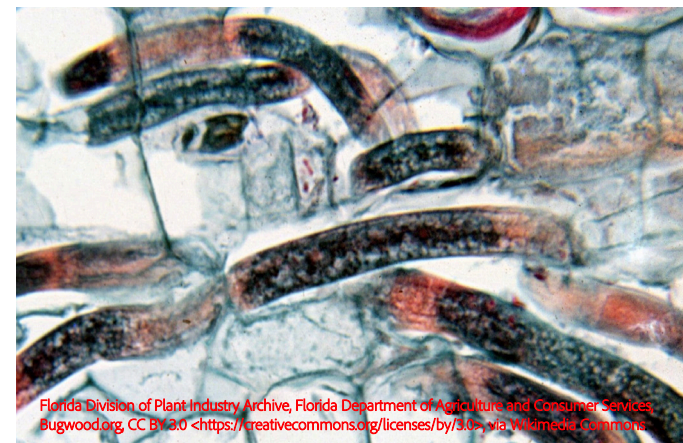
Aspergillus flavus (conidiophore and conidia)\* by Plant pests and diseases is marked with CC0 1.0.

**You have been infected by a disease-producing fungus, die, and decompose. Go back to START.**



Ellen Larsson, CC BY 2.5 <<https://creativecommons.org/licenses/by/2.5/>>, via Wikimedia Commons

**You are a plant root that has formed a beneficial relationship with mycorrhizal fungi. Go to 8, 10, 13, or 14.**



Florida Division of Plant Industry Archive, Florida Department of Agriculture and Consumer Services, Bugwood.org, CC BY 3.0 <<https://creativecommons.org/licenses/by/3.0/>>, via Wikimedia Commons

**You have been eaten by a root-feeding nematode and become a part of it. Go to 8, 13, 14, or 15.**

2

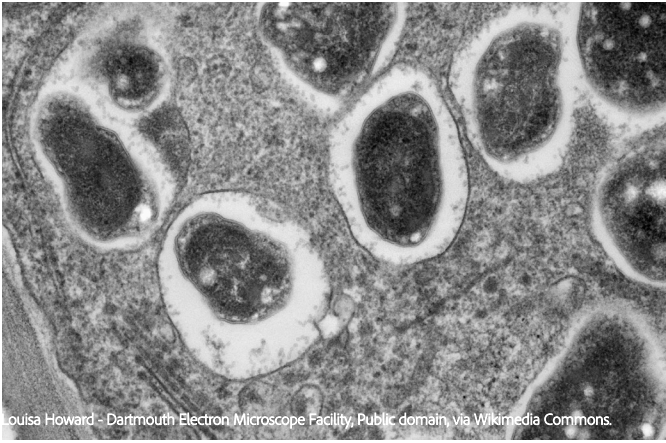
1

4

3

6

5



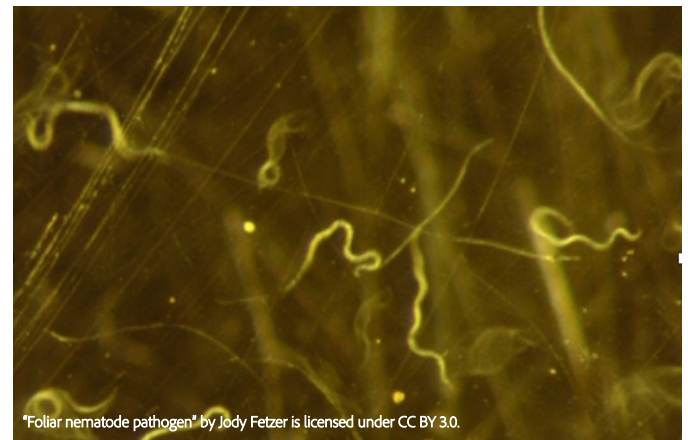
**You have been broken down into organic matter by bacteria.  
Go to 11, 12, or 13.**



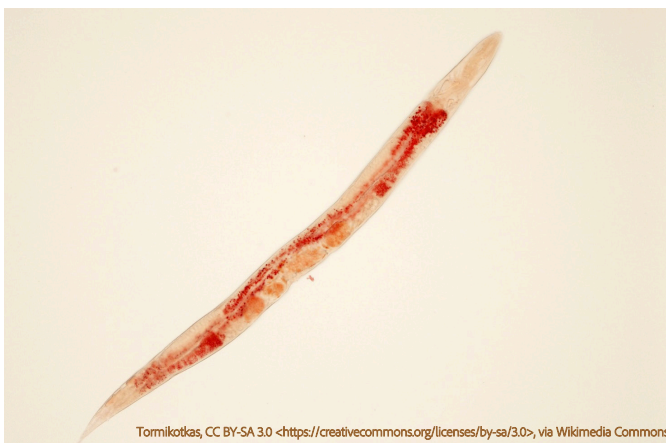
**You got eaten by a pill bug and eliminated as waste that later decomposes.  
Go back to START.**



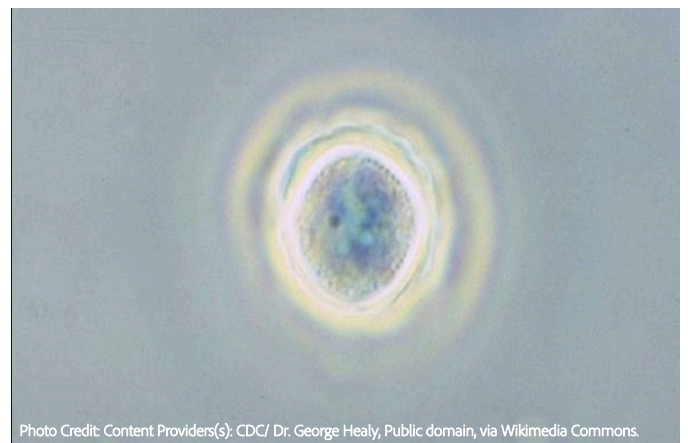
**Get eaten by a potworm and become part of its body.  
Go to 13 or 16.**



**You are eaten by a fungal-feeding nematode and become a part of it.  
Go to 13, 14, or 15.**



**You are eaten by a bacteria-feeding nematode and become a part of it.  
Go to 13, 14, or 15.**



**You are eaten by an amoeba and eliminated as waste, which later decomposes. Go back to START.**

8

7

10

9

12

11





\*Springtail *Isotoma viridis*\* by Bugldy99 is licensed under CC BY-NC 2.0.

**You are eaten by a springtail and become a part of it.  
Go to 16, 18, or 19.**



\*Earthworm in Mud\* by Squeezyboy is licensed under CC BY 2.0.

**You are eaten by an earthworm and become a part of it.  
Go to 17, 19, 20, or 21.**



\*Roundworm (Nematoda) wriggling around on a spider's web.\* by GeeC is licensed under CC BY 2.0.

**You get eaten by a predatory nematode and are now a part of it.  
Go to 8, 13, 14, or 16.**



Ground beetle: \*Ground Beetle, Carabidae\* by Greg Schechter is licensed under CC BY 2.0.

**You get eaten by a ground beetle and are now a part of its body.  
Go to 17 or 19.**



Ants: \*Black Garden Ant tending Citrus Mealybug\* by treegrow is licensed under CC BY 2.0.

**You get attacked by an ant and are left to decompose. Go back to START.**



Pseudoscorpion: \*Pseudo Scorpion Photos\* by hlydecker is licensed under CC BY-NC 2.0.

**You are eaten by a pseudoscorpion and eliminated as waste that later decomposes. Go back to START.**

**14**

**13**

**16**

**15**

**18**

**17**



**You get eaten by a bird and become waste that later decomposes.  
Go back to START.**



**You get attacked by a centipede and left to decompose. Go back to START.**



**You get eaten by a mole and become waste that later decomposes.  
Go back to START.**

**20**

**19**

**21**