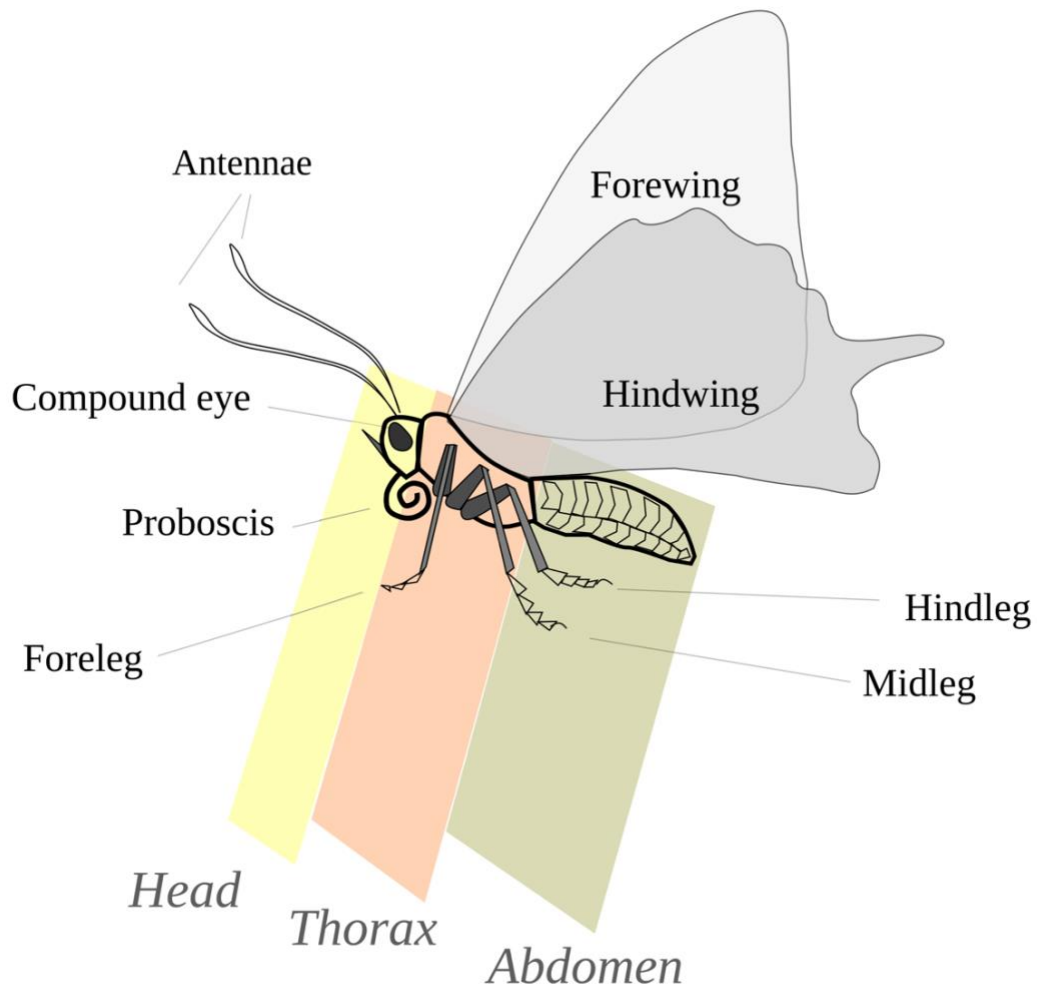


Parts of a Butterfly



https://commons.wikimedia.org/wiki/File:Butterfly_parts.svg
L. Shyamal, CC BY 2.5 <<https://creativecommons.org/licenses/by/2.5/>>, via Wikimedia Commons

- A butterfly has 2 sets of **wings**: larger forewings and smaller hindwings. Wings are made up of colorful scales.
- **Antennae** are found on the head of a butterfly and are used for sensing.
- **Compound eyes** are made up of many small lenses that allow the butterfly to detect movement in many directions at once.
- **A proboscis** a tubelike structure used for drinking.
- The **thorax** is the body part where a butterfly's wings and legs are attached.
- A butterfly's **abdomen** contains the organs needed to survive, such as the digestive system.