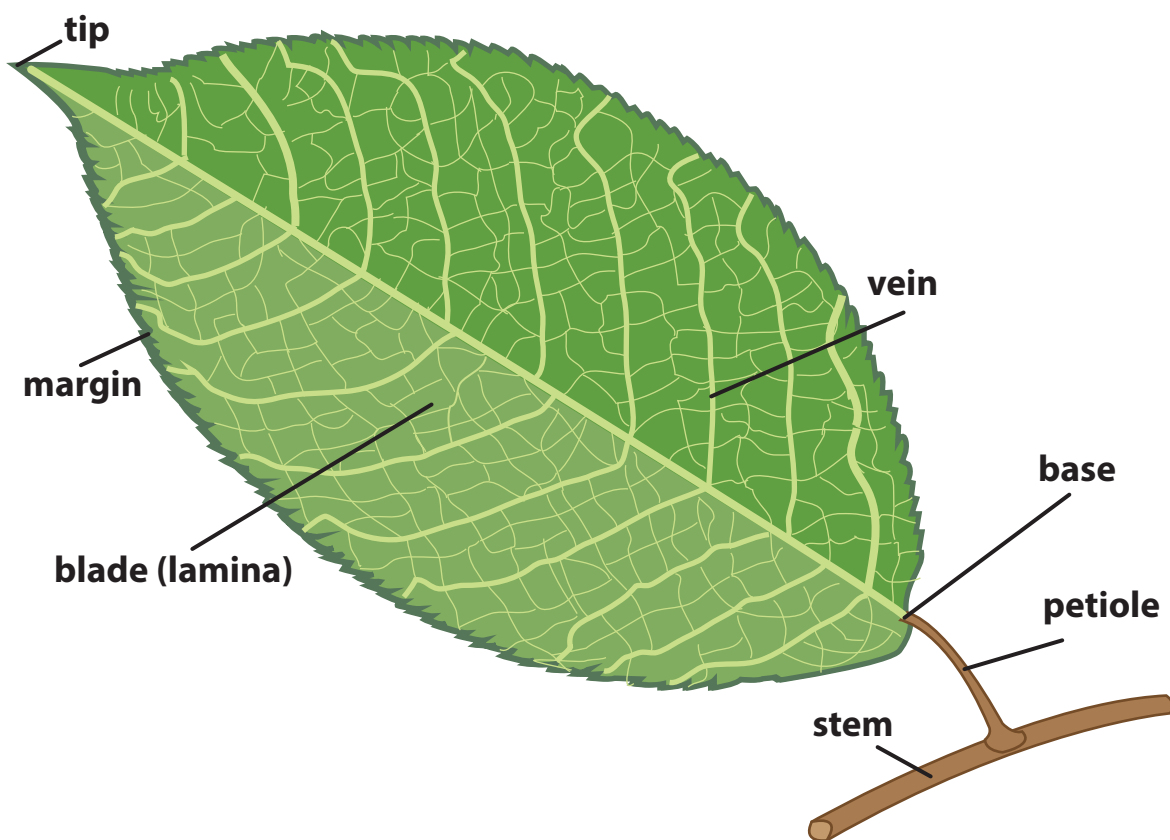


## Leaf Structure



- **leaf blade, or lamina:** large, broad surface of the leaf
- **veins:** transport water and nutrients; provide support
- **tip, or apex:** improves water drainage
- **base:** bottom part of the leaf
- **petiole:** connects the leaf base to the stem of the plant; transports water and nutrients
- **margin:** edge of the leaf